

# Search Engine Software Package Specification

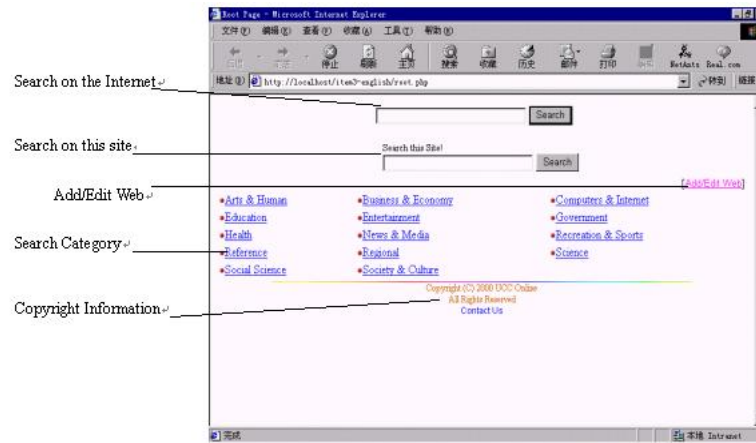
## 1. Software Introduction

With the development and worldwide application of Internet, Some people begin to use Internet to find some information required by them. But unfortunately, there is tremendous amount of information dispersed on the Internet disorderly and unsystematic which make them difficult to find the very information as required. So many search engines emerged as times require. Soon, Search Engines win people's good comment with strong power of search information and timely information supply. But because of shortage of the technicians associated with it, many companies and enterprises are not able to design their own search engines. For these reasons, we designed a search engine software package. The software is a strong search engine, and able to help people to find the latest information as them require.

The Software Package has the following features:

- | Easy to use for users
- | Easy extended system which will be only enlarged some hard space
- | Two search modes: Search mode on the Internet and search mode on the internal web site
- | Exact search mode to avoid finding the outlying information
- | Search mode on the internal web site is based on the system database
- | Search mode on the Internet can help people to get the latest information
- | Search mode on the internal web site provides Boolean calculation operation that makes the search result much more accurate, c.f. §2.1
- | Providing the direct search mode by entering the corresponding category
- | Users can participate in the management of it. But after the system administrator should confirm their management actions, their management works. Users' action include: Registering the web site that is not listed in the system database, Modifying some information of some certain web site, Deleting the null web site
- | Easy online management based on the browser for system administrator. The System Administrator's actions includes: Confirming users' register, modification, deleting of some certain web site (Corresponding to above actions)

The index page of the Search Engine is showed as below:



## 2. Specification For Users

### 2. 1. Search by Keywords

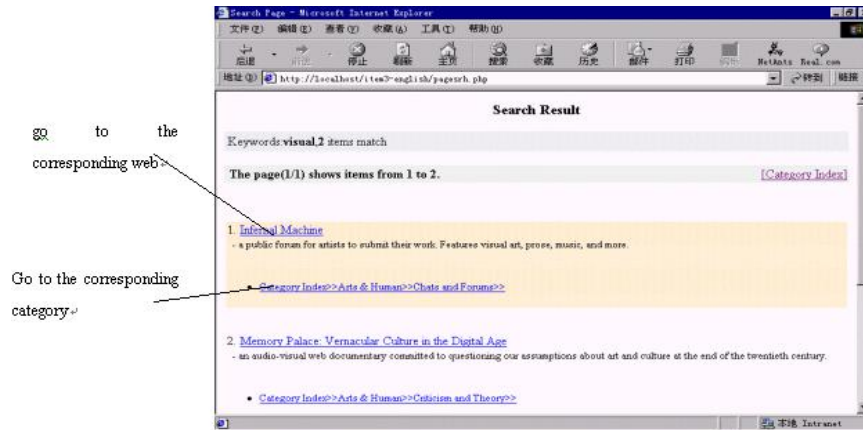
Search mode in this site is based on the database of UCC Search Engine. It support the syntax and Boolean operation below: "+", " ", "&", "-", "!", " |".

"+", " "(one space), "&" mean the condition including both the former **and** the latter word. For Example, the keywords "China+Beijing", "China Beijing" and "China&Beijing" will match the web pages including both the “China” and “Beijing” words.

"|" means the condition including the former **or** the latter word. E.g. the keyword "China|Beijing" will match the web pages including the “China” or “Beijing” word.

"-", "!" mean the condition including only the former, and **not** including the latter word. E.g. the keyword "China-Beijing" and "China!Beijing" will match the web pages including only the “China”, and not including the “Beijing” word.

The search is an exact search mode, so the search results list the exact information. The search result page likes the figure as below (Every page has 20 items of results):



Search mode on the Internet searches the keyword on the Internet and Doesn't need any database, but it doesn't support the syntax and Boolean operation above.

## 2. 2. Search Categories



Click the category you want to view to enter it. Under a certain category, you can view the corresponding information. For the items that have the description, you can click it to go to the corresponding web site. Otherwise, you click it to go to the category.

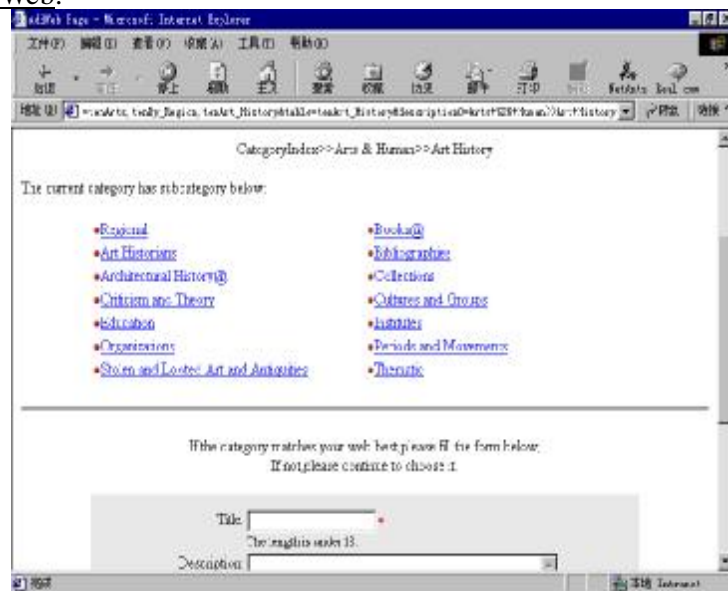
## 2. 3. Add/Edit Web

The search engine uses the “Opening Web Edit Service” mode to make visitors participate in the management of it, but visitors' request for adding or editing a web is examined and approved by the system administrator.



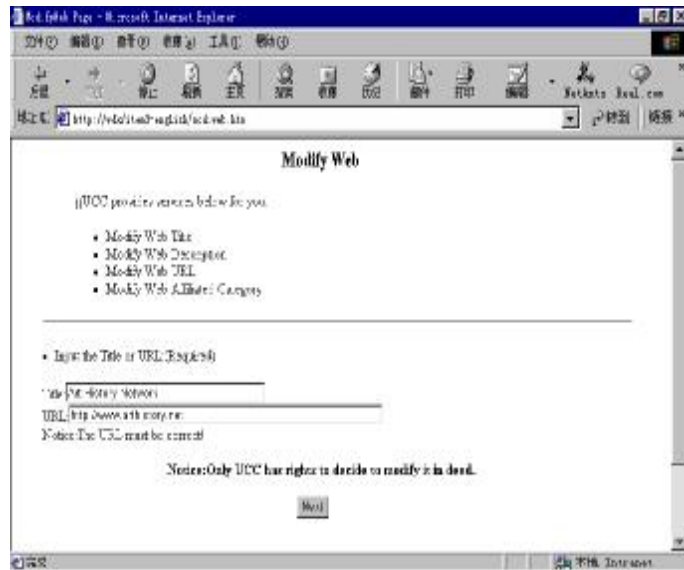
If you want to add or edit a web, you can click the “Add/Edit Web” to go on editing the web, as below:

### Adding a Web:

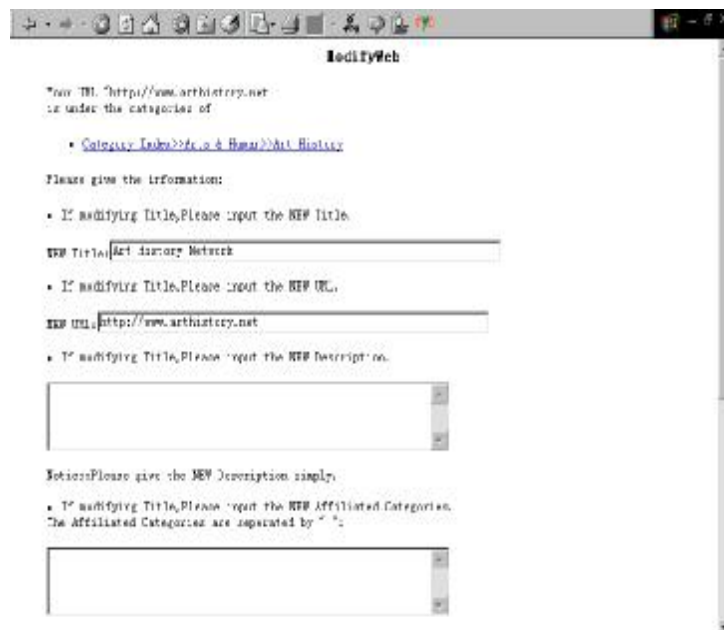


As Below, select a category where you want to place your web which you will add to the system, fill the required information in the blank, and click the “Submit” button to finish your adding operation. In order to avoid somebody adding invalid web to the system, the system administrator has the privilege to determine whether your web adding is valid (i.e. only after the system administrator look through and confirm your request, your operation becomes valid).

### Modifying a Web:



Before modifying a web, please make certain the web is embodied by the system. As below, fill the web's title name and URL in the corresponding blank, and click the "Next" button to go to the second page for web-modifying. As above, the system administrator has the last privilege to determine whether your request is valid.



In the second page for web-modifying, please fill the information you want to modify. Don't fill the information you don't want to modify. At last, click the "Submit" button. If your operation is successful, there appears an alert window whose content is like "Successful". Otherwise, the page will return to the second page to wait for you to re-fill it.

### Deleting a Web:



As above, when you find a certain listed web invalid (i.e. it isn't existed, or it isn't connected) or insalubrious, please fill the web's title name, URL, cause for deleting and so on, and click the "Submit" button to finish your operation. Analogously, the system administrator has the last privilege to determine whether your request is valid.



### Finding a Web:

Please fill the title name or URL in the text field. Notice: The URL should begin with "http://", otherwise the information you fill is considered as the title name. The below is a page for search results. If not found, the system will show the "Not Found" message and suggest you add it to the system.

