

Homepage-Building Software Specification

1. Software Introduction

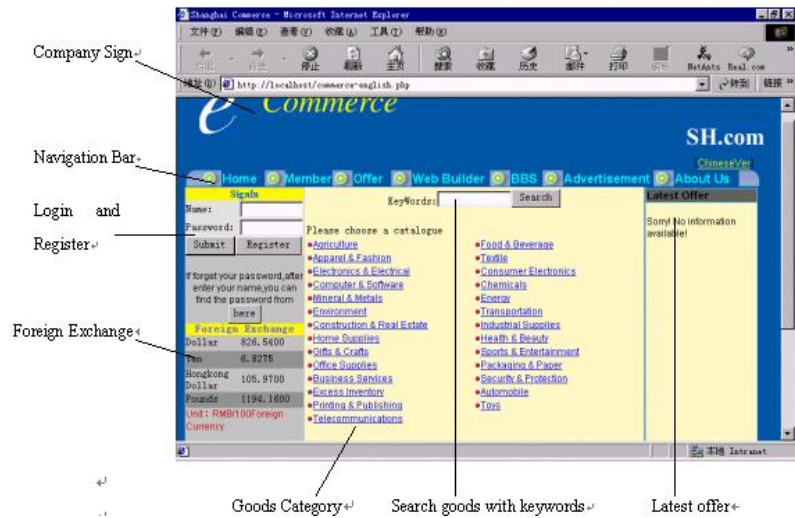
With the fast development of network, network becomes a kind of very important media tool. Compared to traditional media tools, it has some strong superiority: All kinds of Information are spread quickly and widely. So many companies and people use Internet to publicize their companies and enterprises. But unfortunately, For the most Internet users, they are not able to design their homepages, and want to only input some information to build their homepages with the help of some tools. For this reason, we make a Homepage-Building Software Package for companies and enterprises that have some clients above mentioned. The package is easy to install and doesn't need expensive devices. Even PCs are OK for it.

The Software Package has the following features:

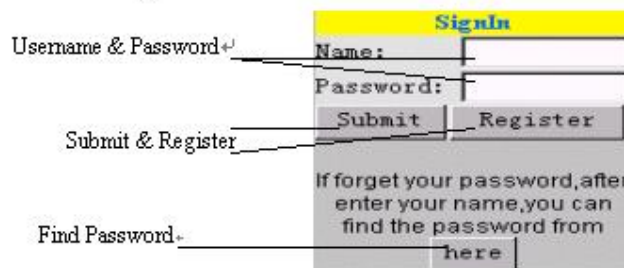
- Easy to use for users: Users are only required to input the corresponding information for homepage building.
- Easy online management for system administrator
- Easy installation of the package
- Low request for system hardware, and PC is OK
- Beautiful and rich styles(closely 20 kinds of styles)
- Strong help online
- Providing Chinese(GB) and English Versions
- Clients can issue their products in their homepages
- The page designer, i. e. Users can preview their pages before issuing on the web at any moment
- The information inputted by users can be modified by users at any moment
- System can analyzing which pages are filled and make tables automatically
- The homepages issued by users are confirmed by system administrator to issue on the internet
- System administrator can view the users' homepage directly

2. Specification for Users

2. 1. Login & Register

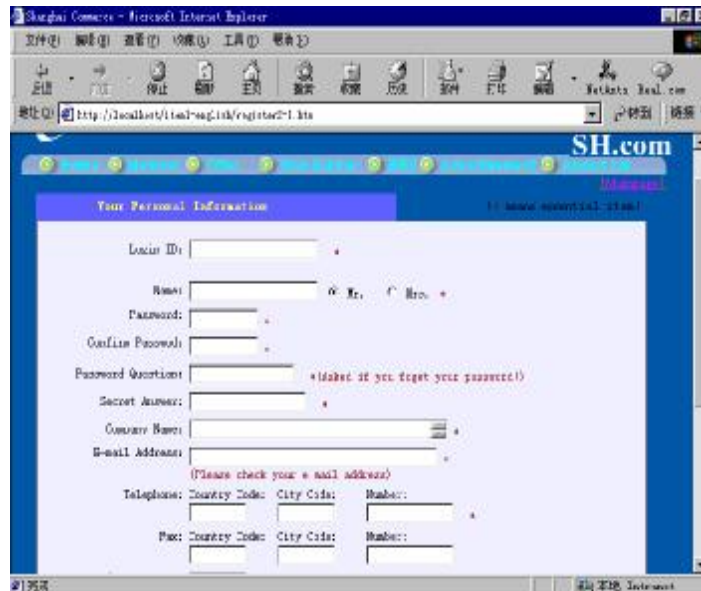


The Index Page is showed as below:



If you are not our member, you must register at first (Notice: The membership is free for all people). Click “Register” button to register, c.f. the figure above. Fill in the personal information and click “Submit ” button to finish your register (Notice: The followed by * represents the one you must fill). The Figure is showed as below:

begin
table
item



If you are our member, you can fill the username and password in and click “Login” button to go back to the Index Page. Then Click “Member” in the navigation bar to enter the member space.If you forget your password,please click “Find password” button to get back your password.



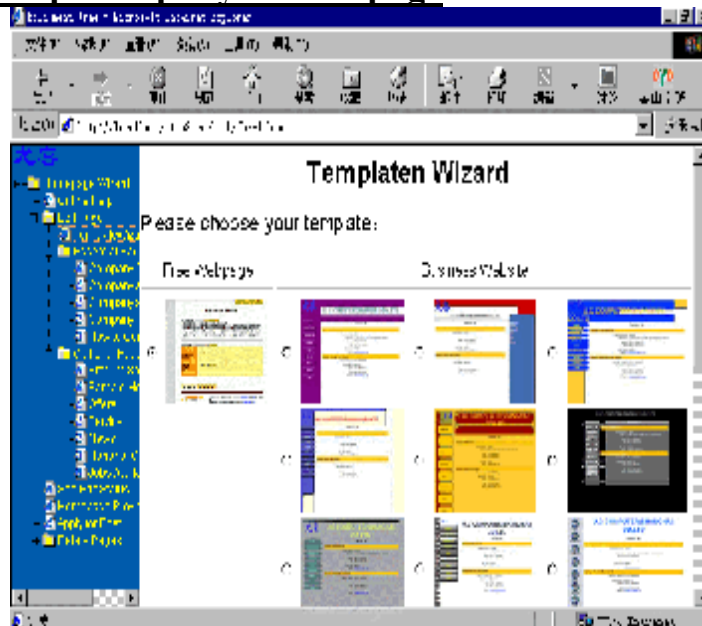
2. 2. Member Space

After you have gone to the member space, You can carry through the following operations (Showed in the following figure):

- ● Modify Password
- ● Modify Personal Information

- ● Back to Home(Page)
- ● Post Offers
- ● Previous Offers(i.e. To View and Edit the information issued by you)
- ● Setup Company's Homepage
- ● Logout (In the Index Page,there exists the item "Logout",too)
- ● Sign Out (i.e.To Cancel the your membership)

2. 3. Setup Company's Homepage



To Click “Setup Company's Homepage”, you can start the Homepage-Building Wizard to help you build your homepage. The main page is showed as below:

● ● Template Wizard

At First, Please choose your favorite style template. Notice: The leftmost one is free for all; the right 16 templates are not free: you must pay some fees that should be paid in a month from the day when you begin to build your homepage. If you don't pay off, your homepage is invalid.

● ● Company Description

After choosing the favorite template, please click “Company Description” located in the left directory tree. The page is showed as below:



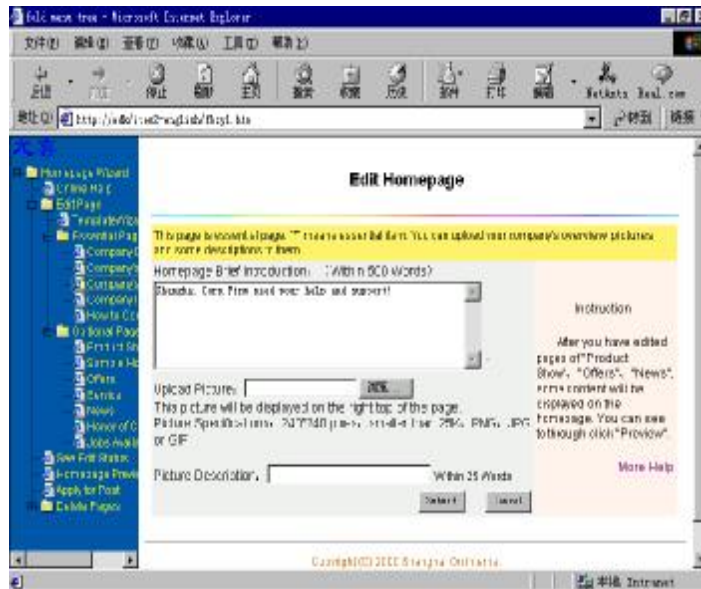
Fill it in the blank and click the “Submit” button, you will see the “Company’s Business” page.

- ● **Company’s Business**



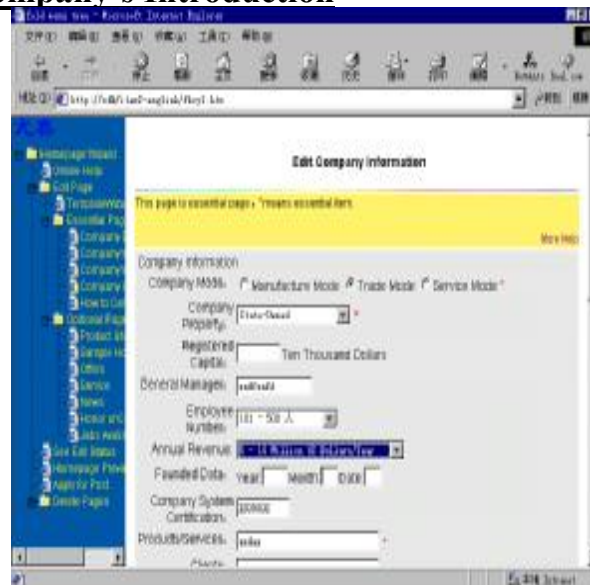
As Below, please choose the affiliated categories of the company’s main service. You can choose ten categories at best in the left selector with pressing “Ctrl” or “Shift” key to choose multiple categories, then click “Add” button to make the right selector list your selected categories. If you want to delete a certain listed category, you can select the one in the right selector and click “Delete” button. At last, click “Submit” button to go to the “” page.

- ● **Company’s Homepage**



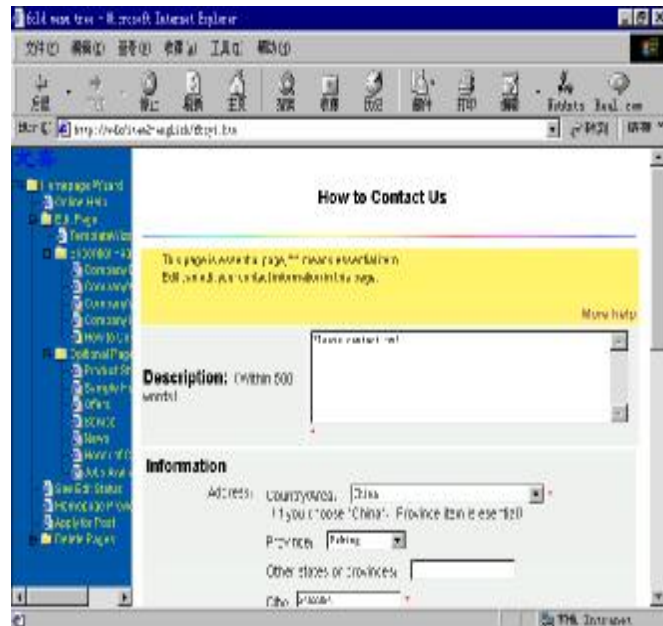
As below, fill in the blank (* represents the required item) and click “Submit” button to go to the “Company’s Introduction” page.

● ● Company’s Introduction



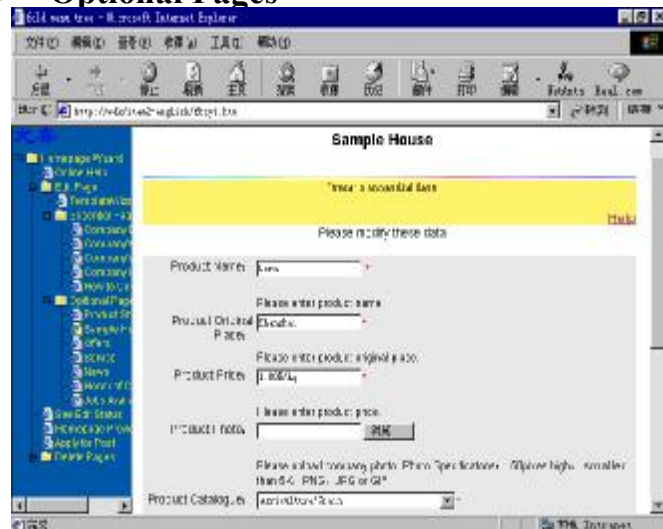
As below, fill the corresponding information about your company in the blank and click the “Submit” button to go to “How to ContactUs” page.

● ● ContactUs



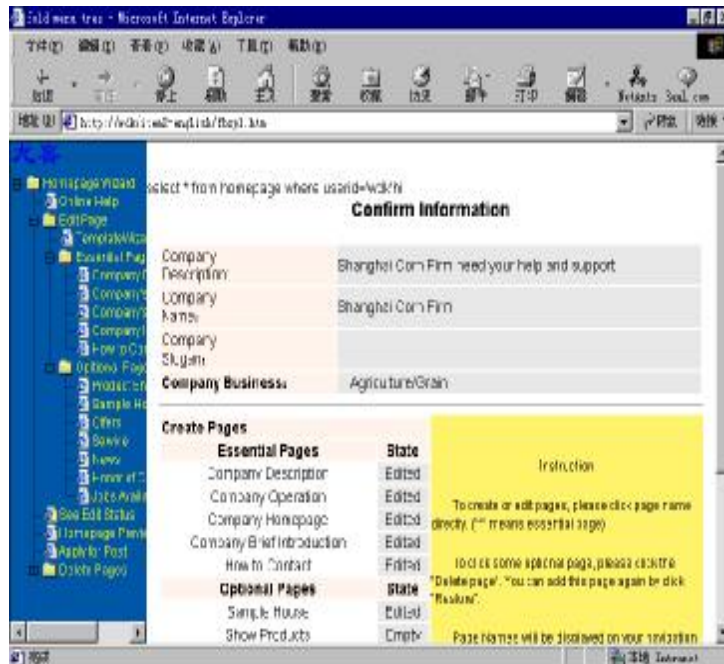
The page is built to make it convenient for your clients to contact you, so you must fill the required items in the blank and make certain they are correct. The page is showed as below:

● ● Optional Pages



The above are the required pages (i.e. Essential pages). As long as you fill those pages, you can make the optional pages. Notice: if you don't fill the optional pages, you can issue your homepage. Click the corresponding links under the "Optional pages" in the leftmost directory and fill the corresponding information as prompt. For Example, the "Sample House" page is showed as below:

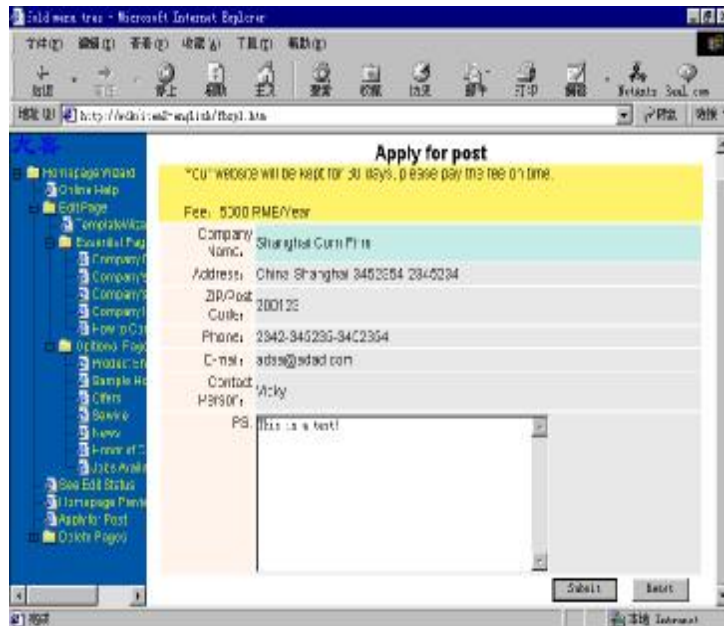
As above, fill the information about your goods and click "Submit" button. Soon, you'll see the issued goods is listed in the table in the underside of the page. What's more, you can edit and delete it. As below:



- ● **Homepage Preview**
Click the "Homepage Preview" link in the leftmost directory, then you can preview your homepage online. The page is exact your homepage issued in the Internet. But, before the issuance, you must apply to the system for post your homepage. This is an example as below:



- ● **Apply for Post**



Click the “Apply for Post” link to go to the “Apply for Post” page. As Below:

Read it and fill the “PS.” in the blank, then click “Submit” button and wait for the system administrator to examine and approve your homepage. Ok, the homepage building is over.

2. 4. Logout

Before the member leaves the web site, he should logout his account for some secure seasons. You can click “Logout” in the any page to logout your account.

3. Specification For System Administrator

Because the module of the management for the System Administrator is supplied with the Chinese Version (GB), please refer to the Chinese Version of the Specification of the Homepage-Building Software Package.